

Bradford Office
2 Festival Square
Little Germany
Bradford
BD1 5BD
01274 398729

Ilkley Office
The Estate Office
10 Castle Yard
Ilkley
LS29 9DT
01943 968522

Keighley Office
Temple Chambers
Russell Street
Keighley
BD21 2JT
01535 600097



FOR SALE

Residential Development Site
with Planning Permission for One
3 Bedroomed Detached House



GUIDE PRICE - £50,000

- **Site extending to approximately 0.087 Acres**
- **Good access to all local amenities**
- **Of interest to local investors and developers**
- **Rare development opportunity**

**EELHOLME VIEW STREET, KEIGHLEY
WEST YORKSHIRE, BD20 6AY**

EELHOLME VIEW STREET, KEIGHLEY WEST YORKSHIRE, BD20 6AY

Location

The site is situated within the Beechcliffe area of Keighley which lies to the North of the Town Centre.

The immediate surroundings are residential in nature.

Description

An undeveloped piece of land which fronts onto Eelholme View Street. Planning permission has been obtained for the construction of 3 bedroom detached house.

Services

We understand that the subject site has reasonable access to all main services. However we recommend that prospective purchasers make their own enquires and satisfy themselves with regards to the availability, suitability and capacity of such services.

Planning

We recommend interested parties make their own enquires with regards their specific use to the local planning office on Tel: 01274 434605, email: planning.enquiries@bradford.gov.uk

Planning permission reference number is 22/04416/FUL

Guide Price

£50,000

VAT

All prices/rents are quoted exclusive of any VAT liability if applicable.

Anti Money Laundering Regulations

In accordance with regulations electronic ID checks will be carried out on purchasers and tenants where required. Confirmation of the funding source will be required.

Legal Costs

Each party will be responsible for their own legal costs incurred during the transaction.

Further Information

Lisa Throupe 01535 600097/07966 300501
lisa@hayfieldrobinson.co.uk

Ian Hayfield – 07966 336616
ijh@hayfieldrobinson.co.uk

Justin Robinson – 07966 336617
ejr@hayfieldrobinson.co.uk

www.hayfieldrobinson.co.uk

Thinking of selling/letting? If you have a property of which you are considering a disposal then please contact us to arrange a no obligation market appraisal.



Bradford Office
 2 Festival Square
 Little Germany
 Bradford
 BD1 5BD
 01274 398729

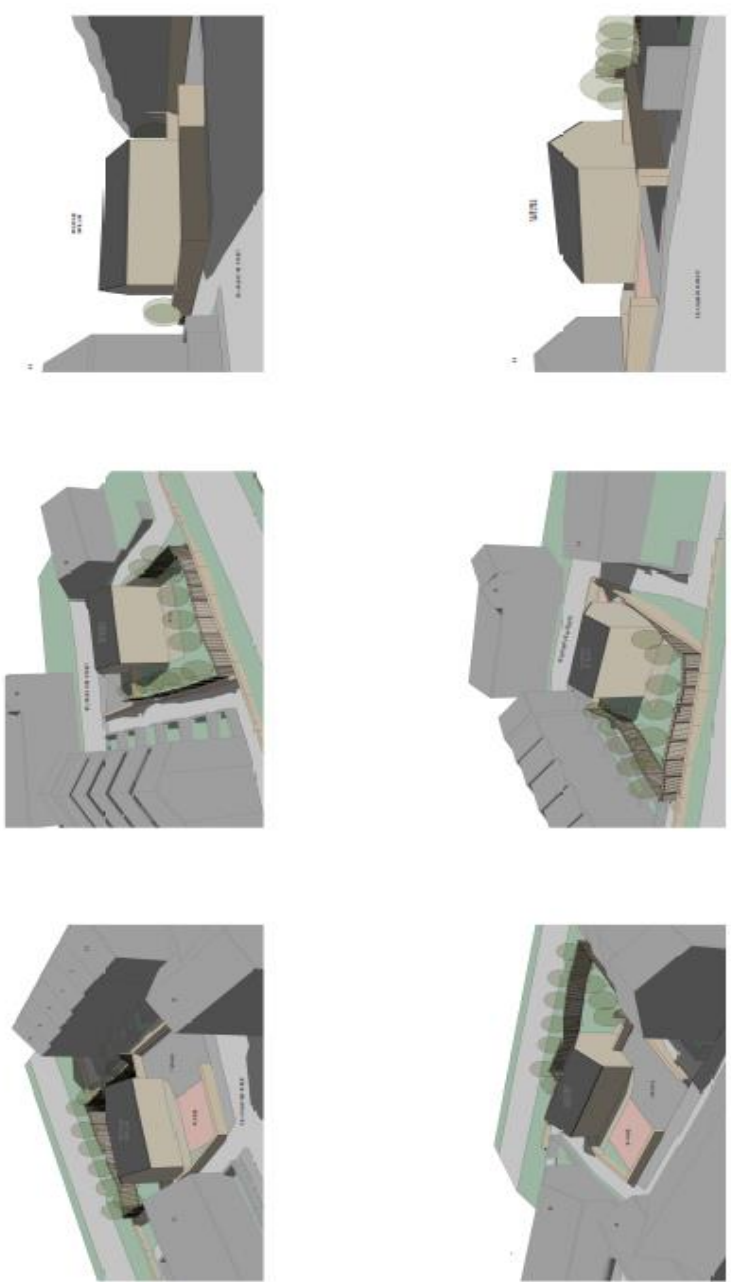
Ilkley Office
 The Estate Office
 10 Castle Yard
 Ilkley
 LS29 9DT
 01943 968522

Keighley Office
 Temple Chambers
 Russell Street
 Keighley
 BD21 2JT
 01535 600097



ARCHITECTS
 LARK ARCHITECTS
 100, 102, 104, 106, 108, 110, 112, 114, 116, 118, 120, 122, 124, 126, 128, 130, 132, 134, 136, 138, 140, 142, 144, 146, 148, 150, 152, 154, 156, 158, 160, 162, 164, 166, 168, 170, 172, 174, 176, 178, 180, 182, 184, 186, 188, 190, 192, 194, 196, 198, 200, 202, 204, 206, 208, 210, 212, 214, 216, 218, 220, 222, 224, 226, 228, 230, 232, 234, 236, 238, 240, 242, 244, 246, 248, 250, 252, 254, 256, 258, 260, 262, 264, 266, 268, 270, 272, 274, 276, 278, 280, 282, 284, 286, 288, 290, 292, 294, 296, 298, 300, 302, 304, 306, 308, 310, 312, 314, 316, 318, 320, 322, 324, 326, 328, 330, 332, 334, 336, 338, 340, 342, 344, 346, 348, 350, 352, 354, 356, 358, 360, 362, 364, 366, 368, 370, 372, 374, 376, 378, 380, 382, 384, 386, 388, 390, 392, 394, 396, 398, 400, 402, 404, 406, 408, 410, 412, 414, 416, 418, 420, 422, 424, 426, 428, 430, 432, 434, 436, 438, 440, 442, 444, 446, 448, 450, 452, 454, 456, 458, 460, 462, 464, 466, 468, 470, 472, 474, 476, 478, 480, 482, 484, 486, 488, 490, 492, 494, 496, 498, 500, 502, 504, 506, 508, 510, 512, 514, 516, 518, 520, 522, 524, 526, 528, 530, 532, 534, 536, 538, 540, 542, 544, 546, 548, 550, 552, 554, 556, 558, 560, 562, 564, 566, 568, 570, 572, 574, 576, 578, 580, 582, 584, 586, 588, 590, 592, 594, 596, 598, 600, 602, 604, 606, 608, 610, 612, 614, 616, 618, 620, 622, 624, 626, 628, 630, 632, 634, 636, 638, 640, 642, 644, 646, 648, 650, 652, 654, 656, 658, 660, 662, 664, 666, 668, 670, 672, 674, 676, 678, 680, 682, 684, 686, 688, 690, 692, 694, 696, 698, 700, 702, 704, 706, 708, 710, 712, 714, 716, 718, 720, 722, 724, 726, 728, 730, 732, 734, 736, 738, 740, 742, 744, 746, 748, 750, 752, 754, 756, 758, 760, 762, 764, 766, 768, 770, 772, 774, 776, 778, 780, 782, 784, 786, 788, 790, 792, 794, 796, 798, 800, 802, 804, 806, 808, 810, 812, 814, 816, 818, 820, 822, 824, 826, 828, 830, 832, 834, 836, 838, 840, 842, 844, 846, 848, 850, 852, 854, 856, 858, 860, 862, 864, 866, 868, 870, 872, 874, 876, 878, 880, 882, 884, 886, 888, 890, 892, 894, 896, 898, 900, 902, 904, 906, 908, 910, 912, 914, 916, 918, 920, 922, 924, 926, 928, 930, 932, 934, 936, 938, 940, 942, 944, 946, 948, 950, 952, 954, 956, 958, 960, 962, 964, 966, 968, 970, 972, 974, 976, 978, 980, 982, 984, 986, 988, 990, 992, 994, 996, 998, 1000

LARK
ARCHITECTS
 100, 102, 104, 106, 108, 110, 112, 114, 116, 118, 120, 122, 124, 126, 128, 130, 132, 134, 136, 138, 140, 142, 144, 146, 148, 150, 152, 154, 156, 158, 160, 162, 164, 166, 168, 170, 172, 174, 176, 178, 180, 182, 184, 186, 188, 190, 192, 194, 196, 198, 200, 202, 204, 206, 208, 210, 212, 214, 216, 218, 220, 222, 224, 226, 228, 230, 232, 234, 236, 238, 240, 242, 244, 246, 248, 250, 252, 254, 256, 258, 260, 262, 264, 266, 268, 270, 272, 274, 276, 278, 280, 282, 284, 286, 288, 290, 292, 294, 296, 298, 300, 302, 304, 306, 308, 310, 312, 314, 316, 318, 320, 322, 324, 326, 328, 330, 332, 334, 336, 338, 340, 342, 344, 346, 348, 350, 352, 354, 356, 358, 360, 362, 364, 366, 368, 370, 372, 374, 376, 378, 380, 382, 384, 386, 388, 390, 392, 394, 396, 398, 400, 402, 404, 406, 408, 410, 412, 414, 416, 418, 420, 422, 424, 426, 428, 430, 432, 434, 436, 438, 440, 442, 444, 446, 448, 450, 452, 454, 456, 458, 460, 462, 464, 466, 468, 470, 472, 474, 476, 478, 480, 482, 484, 486, 488, 490, 492, 494, 496, 498, 500, 502, 504, 506, 508, 510, 512, 514, 516, 518, 520, 522, 524, 526, 528, 530, 532, 534, 536, 538, 540, 542, 544, 546, 548, 550, 552, 554, 556, 558, 560, 562, 564, 566, 568, 570, 572, 574, 576, 578, 580, 582, 584, 586, 588, 590, 592, 594, 596, 598, 600, 602, 604, 606, 608, 610, 612, 614, 616, 618, 620, 622, 624, 626, 628, 630, 632, 634, 636, 638, 640, 642, 644, 646, 648, 650, 652, 654, 656, 658, 660, 662, 664, 666, 668, 670, 672, 674, 676, 678, 680, 682, 684, 686, 688, 690, 692, 694, 696, 698, 700, 702, 704, 706, 708, 710, 712, 714, 716, 718, 720, 722, 724, 726, 728, 730, 732, 734, 736, 738, 740, 742, 744, 746, 748, 750, 752, 754, 756, 758, 760, 762, 764, 766, 768, 770, 772, 774, 776, 778, 780, 782, 784, 786, 788, 790, 792, 794, 796, 798, 800, 802, 804, 806, 808, 810, 812, 814, 816, 818, 820, 822, 824, 826, 828, 830, 832, 834, 836, 838, 840, 842, 844, 846, 848, 850, 852, 854, 856, 858, 860, 862, 864, 866, 868, 870, 872, 874, 876, 878, 880, 882, 884, 886, 888, 890, 892, 894, 896, 898, 900, 902, 904, 906, 908, 910, 912, 914, 916, 918, 920, 922, 924, 926, 928, 930, 932, 934, 936, 938, 940, 942, 944, 946, 948, 950, 952, 954, 956, 958, 960, 962, 964, 966, 968, 970, 972, 974, 976, 978, 980, 982, 984, 986, 988, 990, 992, 994, 996, 998, 1000



Hayfield Robinson Limited for itself, for any joint agent and for the vendors or lessors of this property whose agents they are, give notice that: (i) the particulars are set out as a general outline only for the guidance of the intending purchasers or tenants and do not constitute the whole or any part of an offer or contract; (ii) all descriptions, dimensions, references to condition and necessary permission for use and occupation and other details are given in good faith and are believed to be correct, but any intending purchasers or tenants should not rely on them as statements or representations of fact but satisfy themselves by inspection or otherwise as to the correctness of each of them; (iii) no person in the employment of Hayfield Robinson Limited or any joint agent has any authority to make or give any representations or warranty whatsoever in relation to this property; (iv) all prices and rents are quoted exclusive of VAT; (v) reference to any plant, machinery or services shall not constitute a representation (unless otherwise stated) as to its state or condition or that it is capable of fulfilling its intended function.

